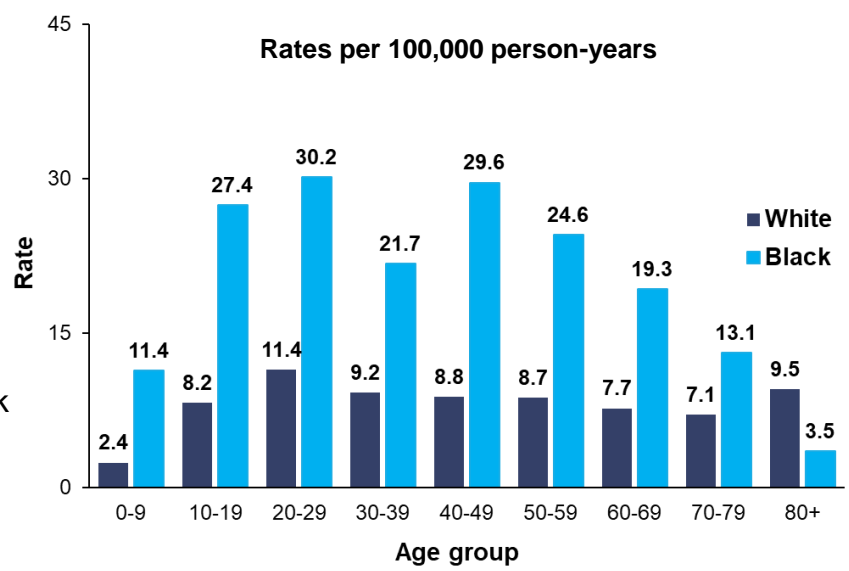


# North Carolina Emergency Department (ED) Visits for Pedestrians Injured in Police-Reported Traffic-Related Motor Vehicle Crashes (MVCs), 2017

We linked 2017 NC DETECT ED visit data to police-reported motor vehicle crash data to analyze the demographic characteristics and health outcomes of pedestrians injured in MVCs.

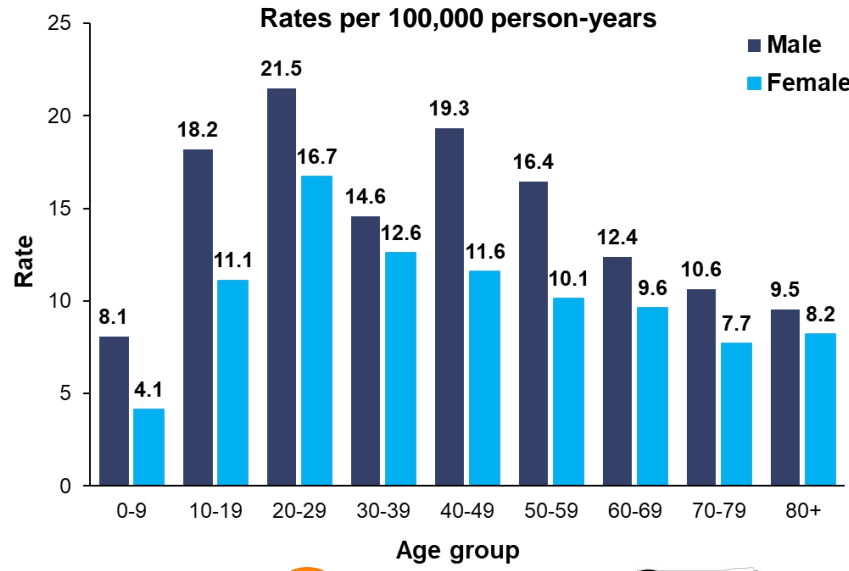
## Age Group & Race

- The injury rates for Black pedestrians in NC are higher for every age group *except* those 80 years old and older.
- Further research and efforts are needed to address these disparities, but they may reflect lack of access to infrastructure such as sidewalks, adequate lighting, and crossing signals.
- These rates may also highlight the impact of locating busy roadways through historically Black and Brown neighborhoods.



## Age Group & Gender

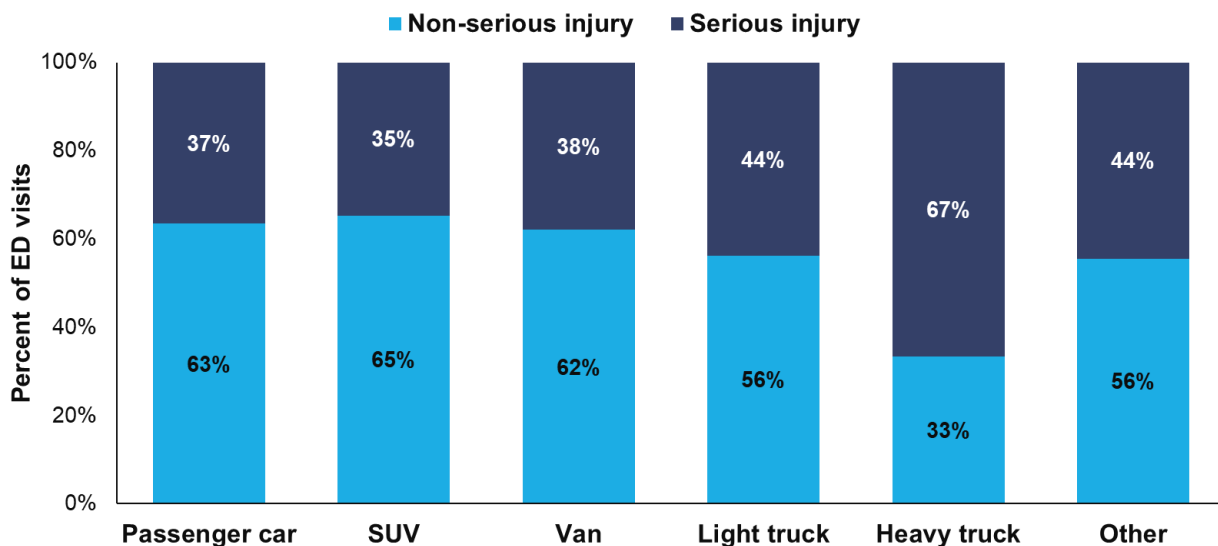
- As with other MVCs, males have higher rates than females for pedestrian injuries treated in EDs across every age group.
- The 20-29 age group has the highest injury rate across both genders.



Source: Carolina Center for Health Informatics / [cchi.web.unc.edu](http://cchi.web.unc.edu) / Department of Emergency Medicine, UNC Chapel Hill  
 NC Division of Public Health / [publichealth.nc.gov](http://publichealth.nc.gov) / Injury Epidemiology & Surveillance Unit  
 NC DETECT  
 State of North Carolina / Department of Health and Human Services / [ncdhhs.gov](http://ncdhhs.gov)  
 NC DHHS is an equal opportunity employer and provider.  
 June 30, 2021

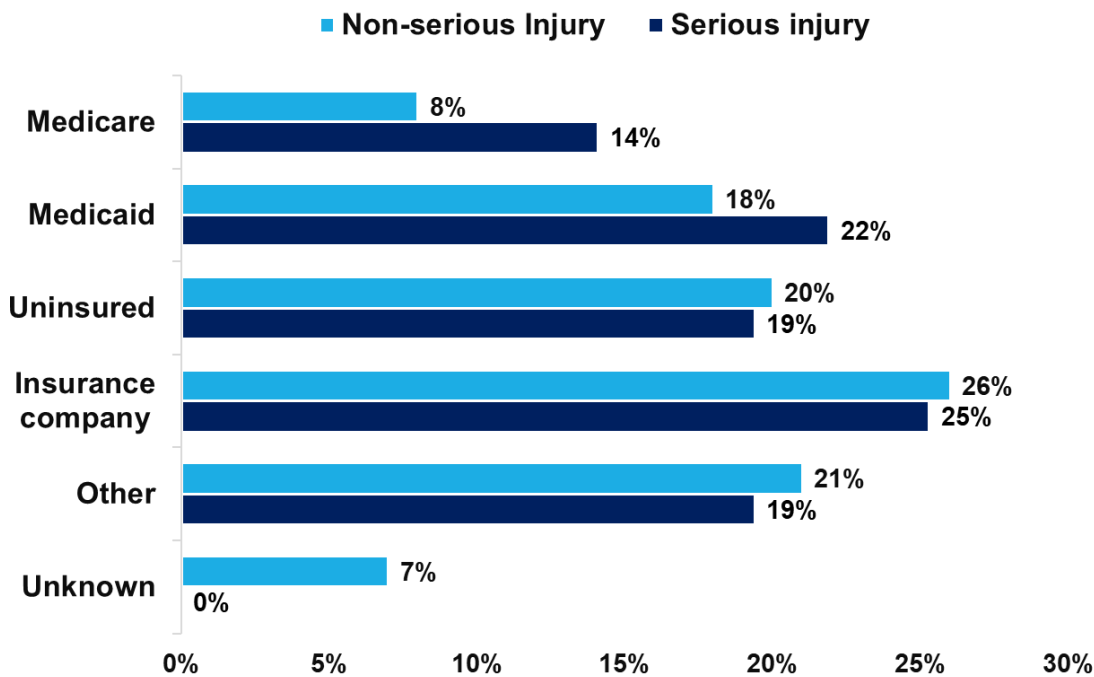
### Striking Vehicle Type

- Unsurprisingly, trucks cause the highest percentage of serious pedestrian injuries.



### Expected Source of Payment

- Most pedestrian injuries of any severity are not covered by private insurance.
- The higher percentage of serious injuries covered by Medicare may reflect that older pedestrians tend to have more severe injuries.



Source: Carolina Center for Health Informatics / [cchi.web.unc.edu](http://cchi.web.unc.edu) / Department of Emergency Medicine, UNC Chapel Hill  
 NC Division of Public Health / [publichealth.nc.gov](http://publichealth.nc.gov) / Injury Epidemiology & Surveillance Unit

NC DETECT

State of North Carolina / Department of Health and Human Services / [ncdhhs.gov](http://ncdhhs.gov)  
 NC DHHS is an equal opportunity employer and provider.